

# *Chalet Clovis*



*Beaumier*  
**L'ALPAGA**  
Alt. 1100 M MEGÈVE ALPES



## CHALET CLOVIS

Away from Megève, perched at an altitude of 1100 metres and facing Mont-Blanc, discover a unique haven of peace. A chalet nestling in the heart of nature, in a cosy little hamlet.

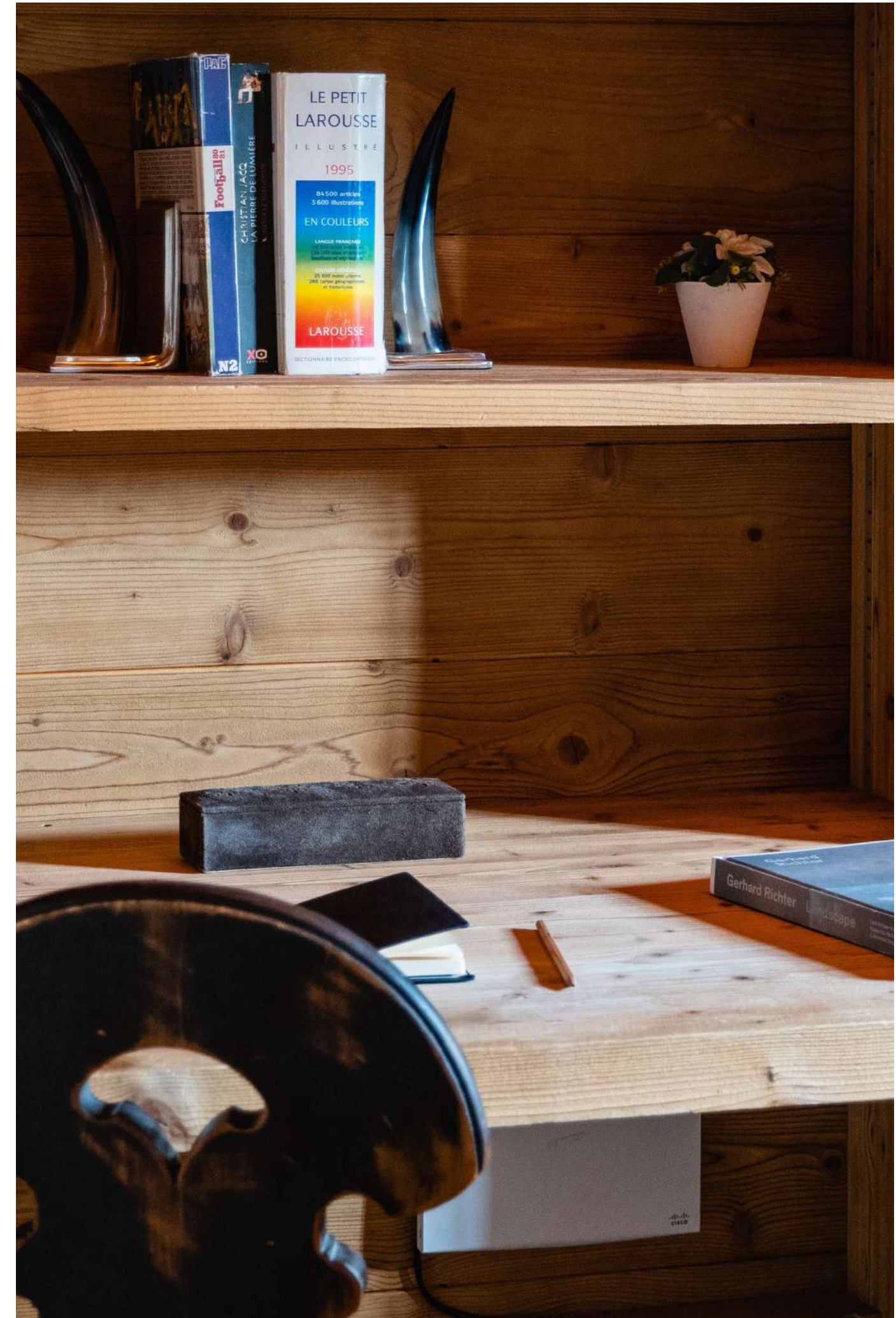
Combining an intimate atmosphere with hotel services, Chalet Clovis is the ideal place for an exceptional holiday.

With a surface area of 255m<sup>2</sup>, this chalet has been designed in the purest Megevanne tradition. The chalet is designed to accommodate up to 10 people over 3 floors, with its 4 bedrooms and 4 bathrooms. The large terraces and balconies are a natural invitation for guests to enjoy a moment of contemplation, facing the mountains.

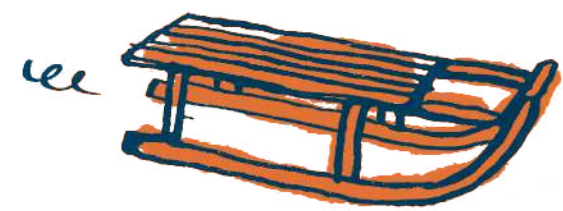




CHALET CLOVIS

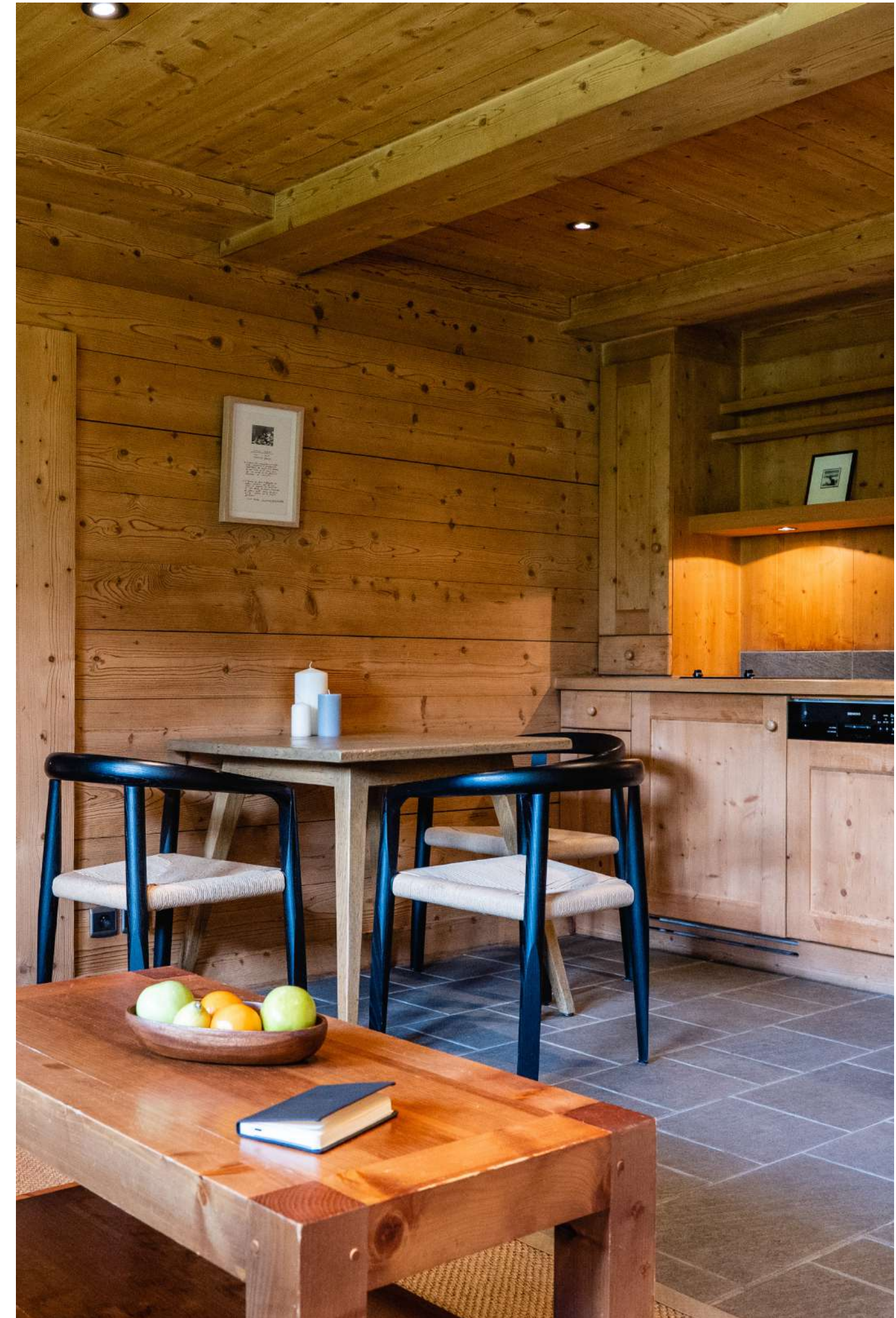


CHALET CLOVIS





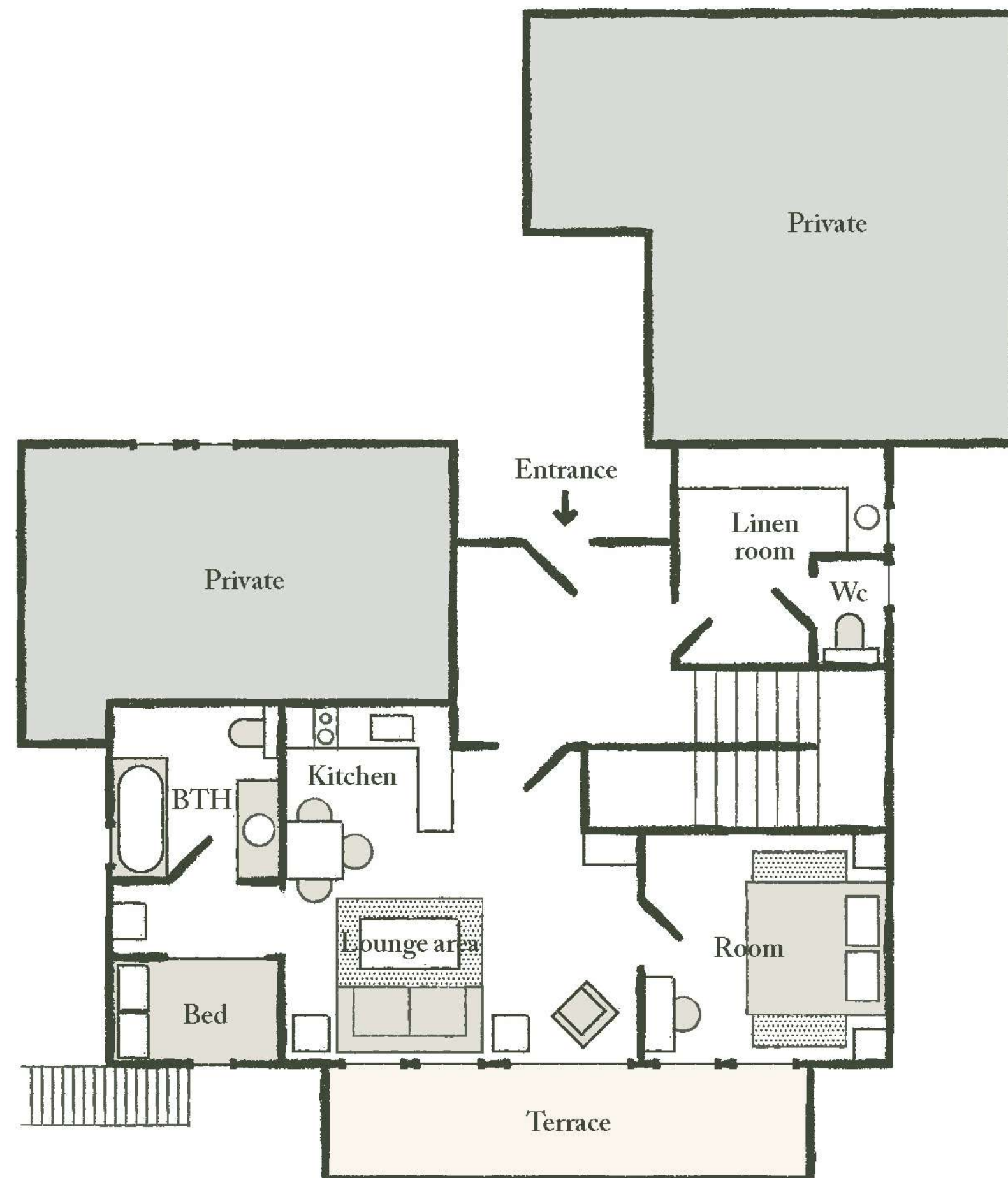
CHALET CLOVIS





## THE GARDEN FLOOR

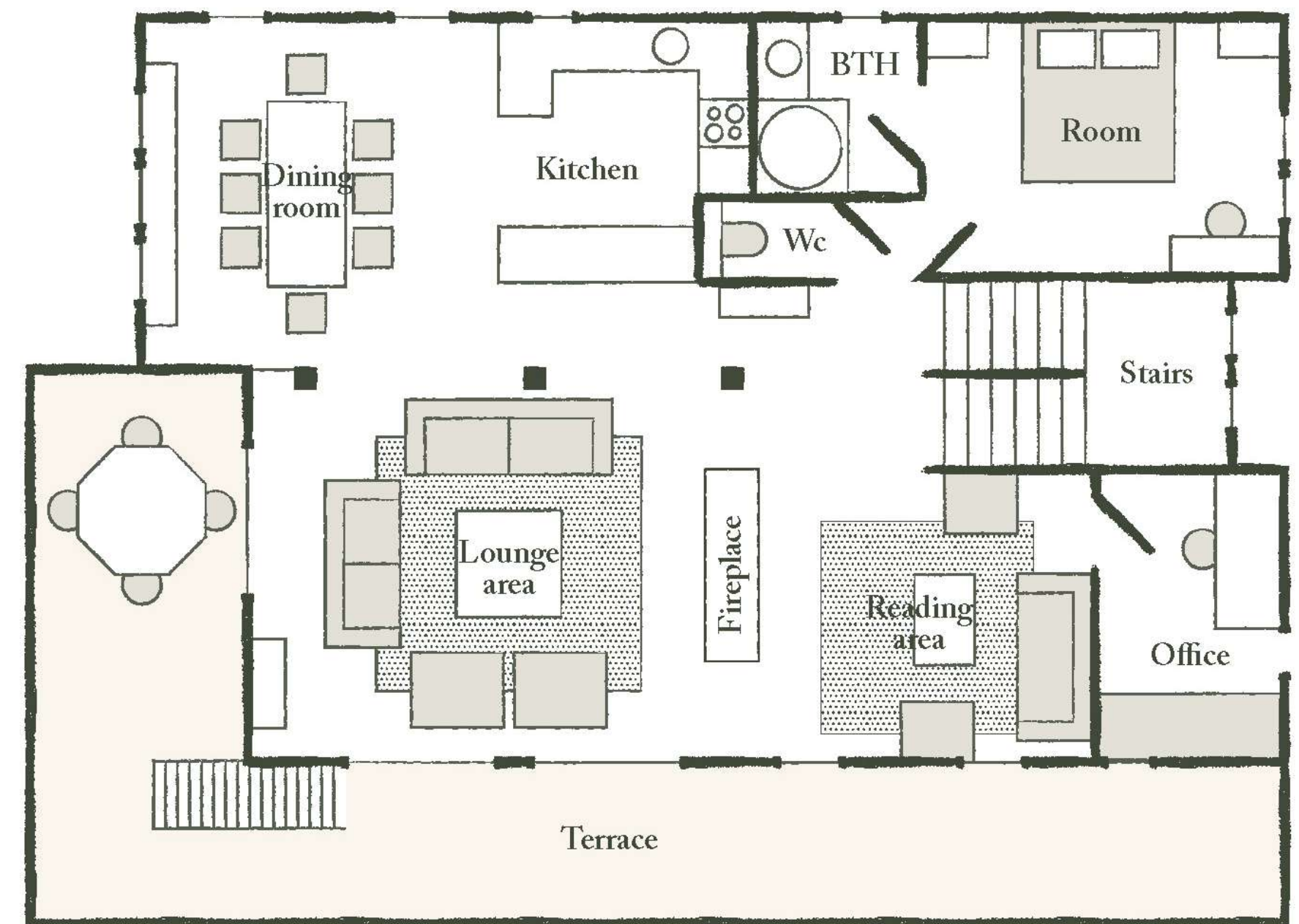
It comprises a private studio with 1 bedroom and a Savoyard bed, a bathroom or shower and toilet, a kitchen with dining area and a cosy lounge opening onto the private terrace, a laundry room, separate toilet and washbasin.





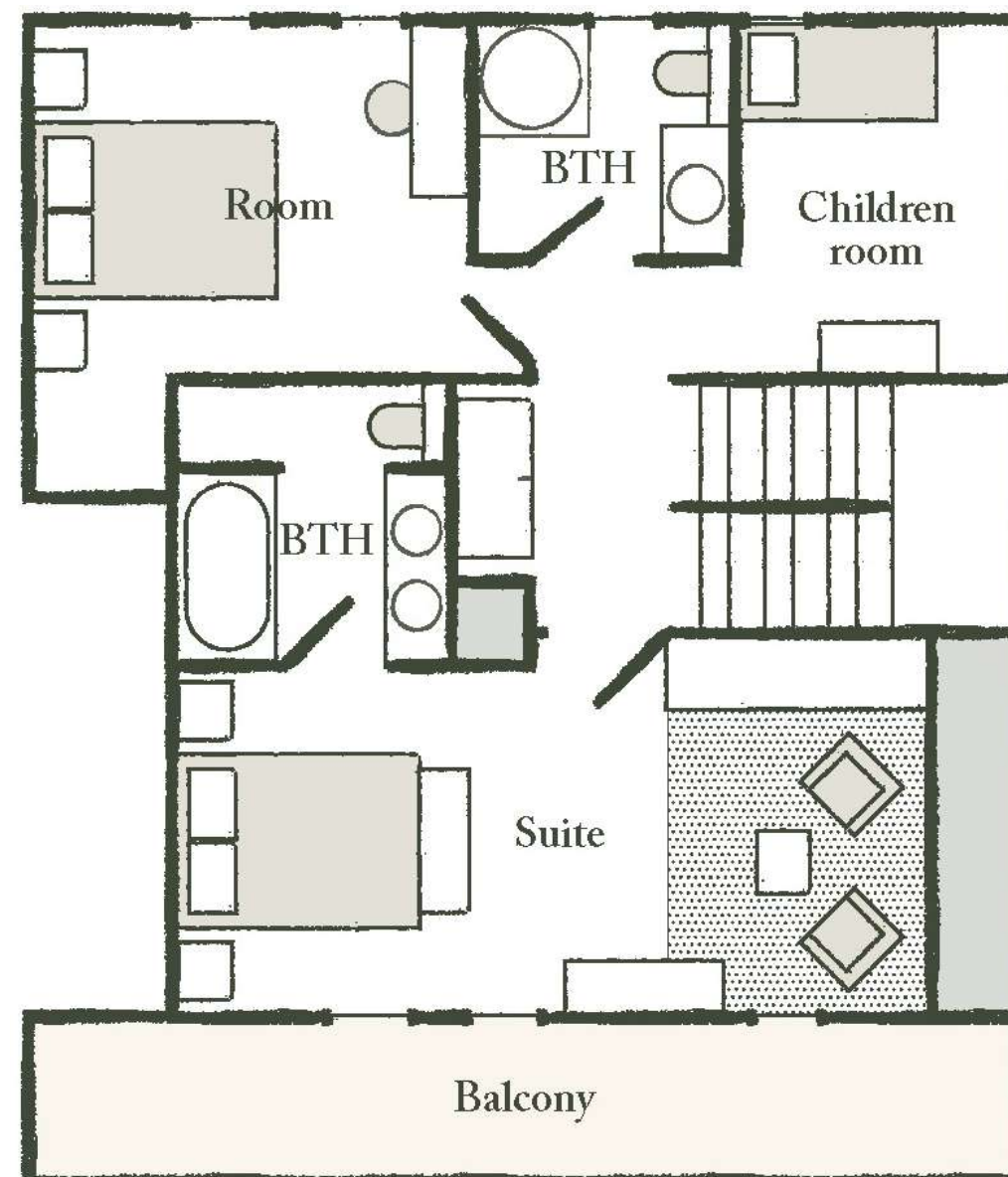
## THE MAIN FLOOR

Large living room with natural wood fireplace and large sofas. The large French windows open onto the corner balcony. Adjoining the lounge is the dining room, with its large oak table. The double bedroom has its own shower room. Next to the living room is a reading area and a small study/library with a single bed. Finally, there's the contemporary, fully-equipped kitchen, ideal for family get-togethers.



## THE TOP FLOOR

2 bedrooms with character and 2 bathrooms occupy this charming floor, under the wooden roof structure: the master bedroom with its en suite bathroom and private balcony is absolutely romantic. Finally, for young adventurers, there is a children's area under the roof structure with a single bed.



## THE HOTEL L'ALPAGA\*\*\*\*\*

Staying in Chalet Clovis also means having access to the areas and services of L'Alpaga:

### LA TABLE

*de l'Alpaga*

In 2023, the *La Table de l'Alpaga* restaurant was awarded 1 star in the Michelin Guide. This gastronomic restaurant offers a gourmet and sparkling cuisine prepared by our Chef Alexandre Baule, which puts the mountain in the spotlight and offers a contemporary and elegant setting.

### le bistrot

*de l'Alpaga*

This restaurant offers bistro lounge cuisine by Chef Alexandre Baule. It's the ideal place for an informal lunch or dinner.

### LE BAR

*de l'Alpaga*

Indoors or on the terrace, this is the perfect place to enjoy a refreshing drink or cocktail, prepared by our mixologist.

### LE SPA

*de l'Alpaga*

The *Spa de l'Alpaga* has a fun indoor pool with bubbles and massage jets, a hammam and two treatment rooms. Outside, and facing Mont-Blanc, the Scandinavian bath will allow you to relax in an exceptional setting.



## CHALET CLOVIS

### SERVICES INCLUDED

- Breakfast served in the restaurant
  - Internet access
  - Access to the spa  
*(leisure pool, hammam,  
Scandinavian bath,  
sauna facing Mont-Blanc  
and fitness area)*
  - Free shuttle service  
from 8am to 11pm
- Hotel taxes and services  
(excluding tourist tax)
- Hotel concierge service
  - Room service

### OPTIONAL SERVICES

- Private car with driver
- Private chef in chalet  
(evening or weekly)
- Breakfast delivery to chalet
- Secure covered parking





## CHALET CLOVIS

Because Megève is all about being outdoors and on the move, you can take advantage of a whole range of activities and experiences to get the most out of the area: snowshoeing and ski touring to get close to the snow, flying over Mont-Blanc, paragliding, tobogganing or dog sledding — you'll be spoilt for choice.



## CONTACT

**Sales Manager**  
Emily Hamilton

*e.hamilton.alpaga@beaumier.com*

+33 (0)6 31 15 65 19

+33 (0)4 50 91 48 72



### GDS

AMADEUS (IA) = YX : MVVALP

SABRE (AA) = YX : 4800

GALILEO/APOLLO (UA) = YX : 16209

WORLDSPAN (IP) = YX : GVAAL

PEGASUS (WB) = YX : 71986

---